



35 BRAMBLE ROAD

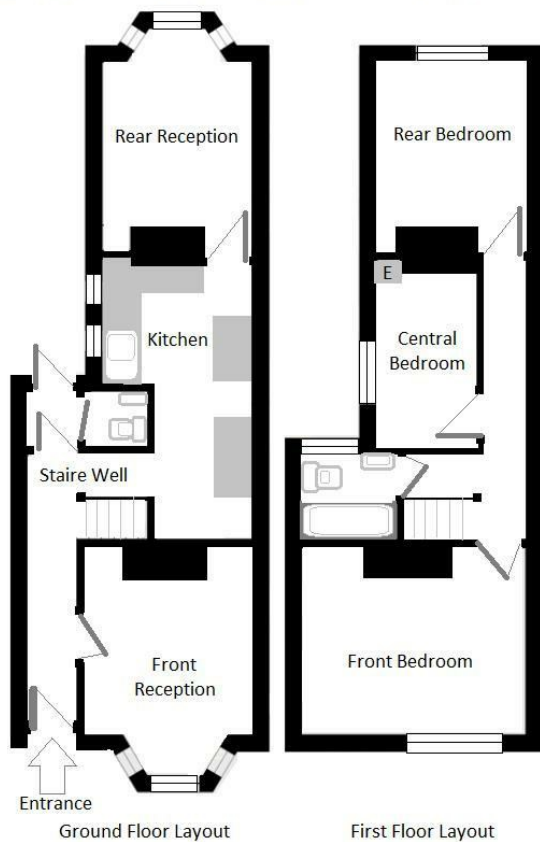
PORTSMOUTH, PO4 0DT

£229,995
FREEHOLD

Located with in the requested terraced district of Central Southsea this mid terraced bay and forecourt house can be offered with vacant possession no forward chain. The accommodation comprises two separate reception rooms, fitted kitchen, ground floor W.,C. first floor bathroom and three upper floor bedrooms. Features include a rear town garden. The property requires in our opinion a program of light refurbishment and redecoration. The property is priced accordingly. Sole Agents Christie's Estates.



This Floor Plan Is Not Drawn To Scale & Is For Guidance Purposes Only



Energy Efficiency Rating		
	Current	Potential
Very energy efficient - lower running costs		
(92 plus) A		
(81-91) B		
(69-80) C		
(55-68) D	65	
(39-54) E		
(21-38) F		
(1-20) G		
Not energy efficient - higher running costs		
England & Wales	EU Directive 2002/91/EC	

Agents Note: Whilst every care has been taken to prepare these particulars, they are for guidance purposes only. All measurements are approximate and are for general guidance purposes only and whilst every care has been taken to ensure their accuracy, they should not be relied upon and potential buyers/tenants are advised to recheck the measurements

Southsea Office Sales
 97 Albert Road
 Southsea
 Hampshire
 PO5 2SG

02392 830888
 sales@christieuk.com
 www.christieuk.com

